

EN – Instructions for installation of modular outlets in NEXA design

Installation of switch mounting box:

- Use switch mounting box of min. depth 40 mm
- The switch mounting box must be placed flat (in plane) with the plaster wall.
In case of problems with a "sunk" mounting box, the VK1 or VK2 spacer (distance) rings must be used in order to prevent deformation of the fittings when the screws are tightened.
- To install multiple fitting assemblies, it is necessary to use multiple boxes with 71 mm spacing of centres

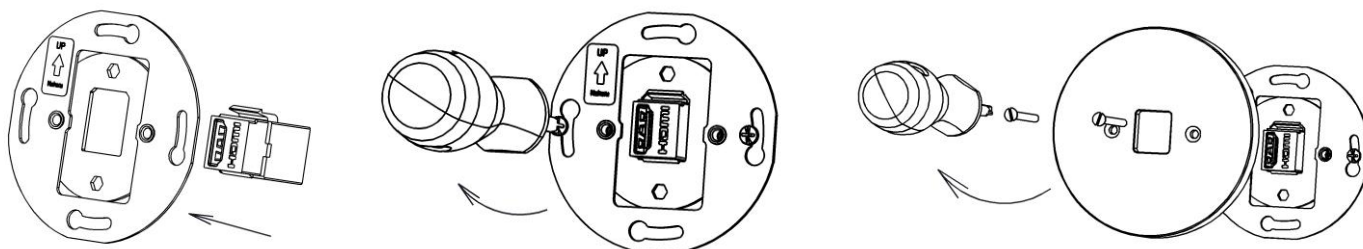
Completion of modular outlet installation:

- insert the keystone module into the support frame of the communication (data) socket (Fig. 1). Keystone modules can be HDMI, RJ45, SAT, TV, USB, blind plug, USB charger 2.1 A; 5V DC, etc. Instructions for connecting the keystone module are supplied with the ordered module.
- Fixing keystone outlet to the mounting box is done via the support frame using two screws of 3 mm diameter (Fig.2). The fastening screw must not have a countersunk head.
- Place a design frame (glass, wood) on the support frame of the device and lock it with screws (Fig. 3). When using a glass frame, tighten screws with a torque of 0,05 Nm – this prevents cracking of the frame due to its fragility.
- Supplied screws must not be interchanged with other type.

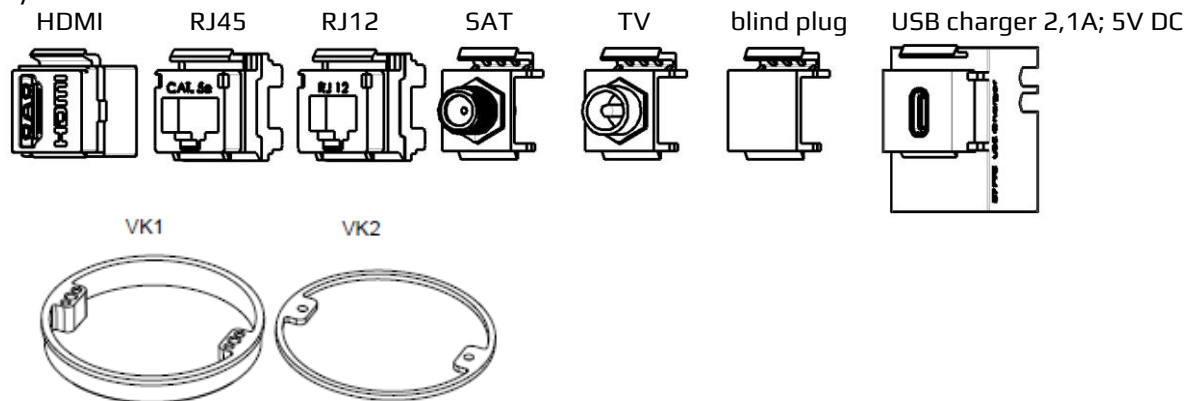
Fig. 1

Fig. 2

Fig. 3



Keystone modules:



The VK1 or VK2 spacer (distance) rings are not included.

Maintenance:

The device does not require any maintenance!

Switch covers must never be wiped or washed by abrasive cleaning cloths and do not use any aggressive chemicals (petrol, acetone, etc.).

Notice:

Installation and possible disassembly must be entrusted to a person with appropriate electrical qualification. Always disconnect the mains voltage before installation (or dismantling)!

Do not use a broken or damaged device and secure it against use. If the device is not fitted with visible parts, it must not be energized or operated with.